

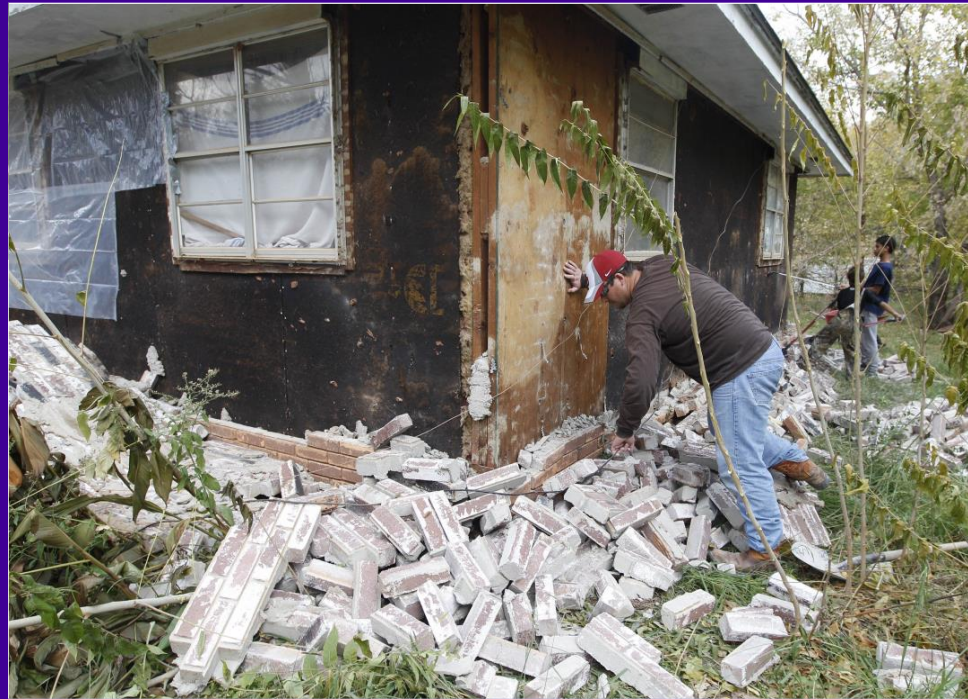
Danielle Sumy, PhD (IRIS Project Associate)



Postdoc 2013-2014	University of Southern California, Petroleum Engineering
NSF Postdoc 2011-2014	United States Geological Survey, Pasadena, CA
PhD 2011	Lamont-Doherty Earth Observatory, Columbia University
BS 2005	Florida State University



2011 M5.6 Prague, Oklahoma

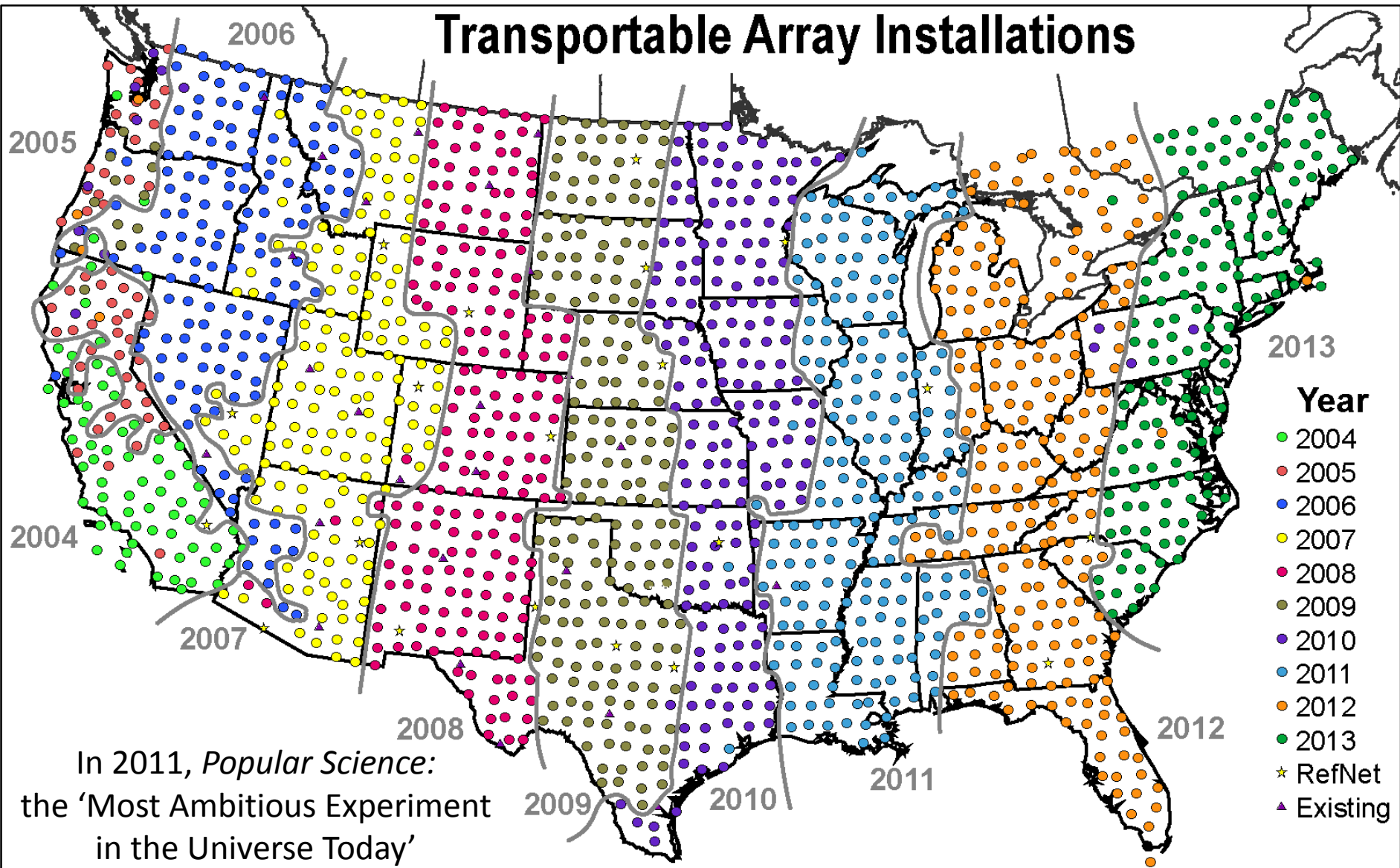


Photos from *The Oklahoman*



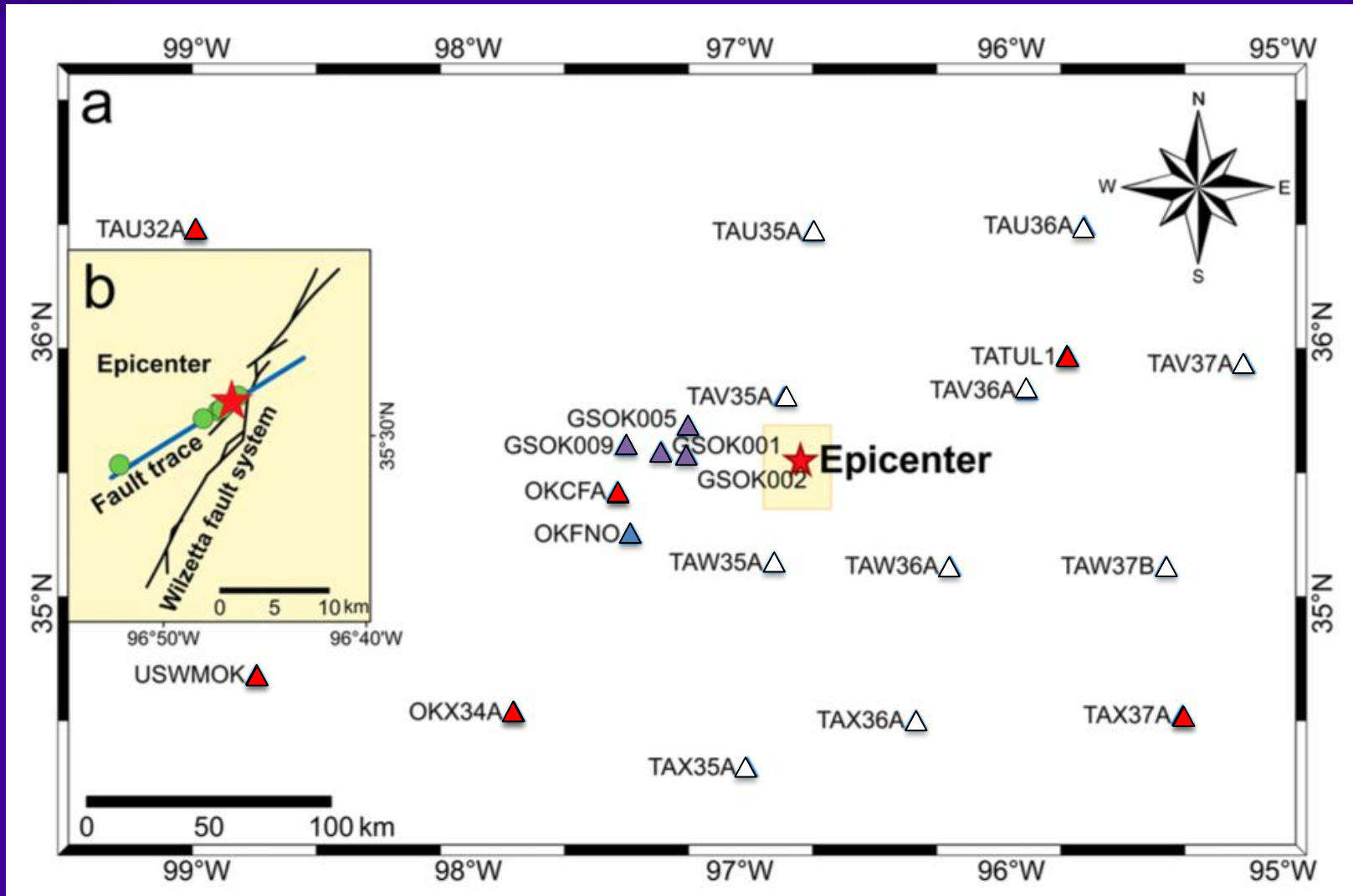
The TA: Ten Year "As Built"

Transportable Array Installations



In 2011, *Popular Science*:
the 'Most Ambitious Experiment
in the Universe Today'

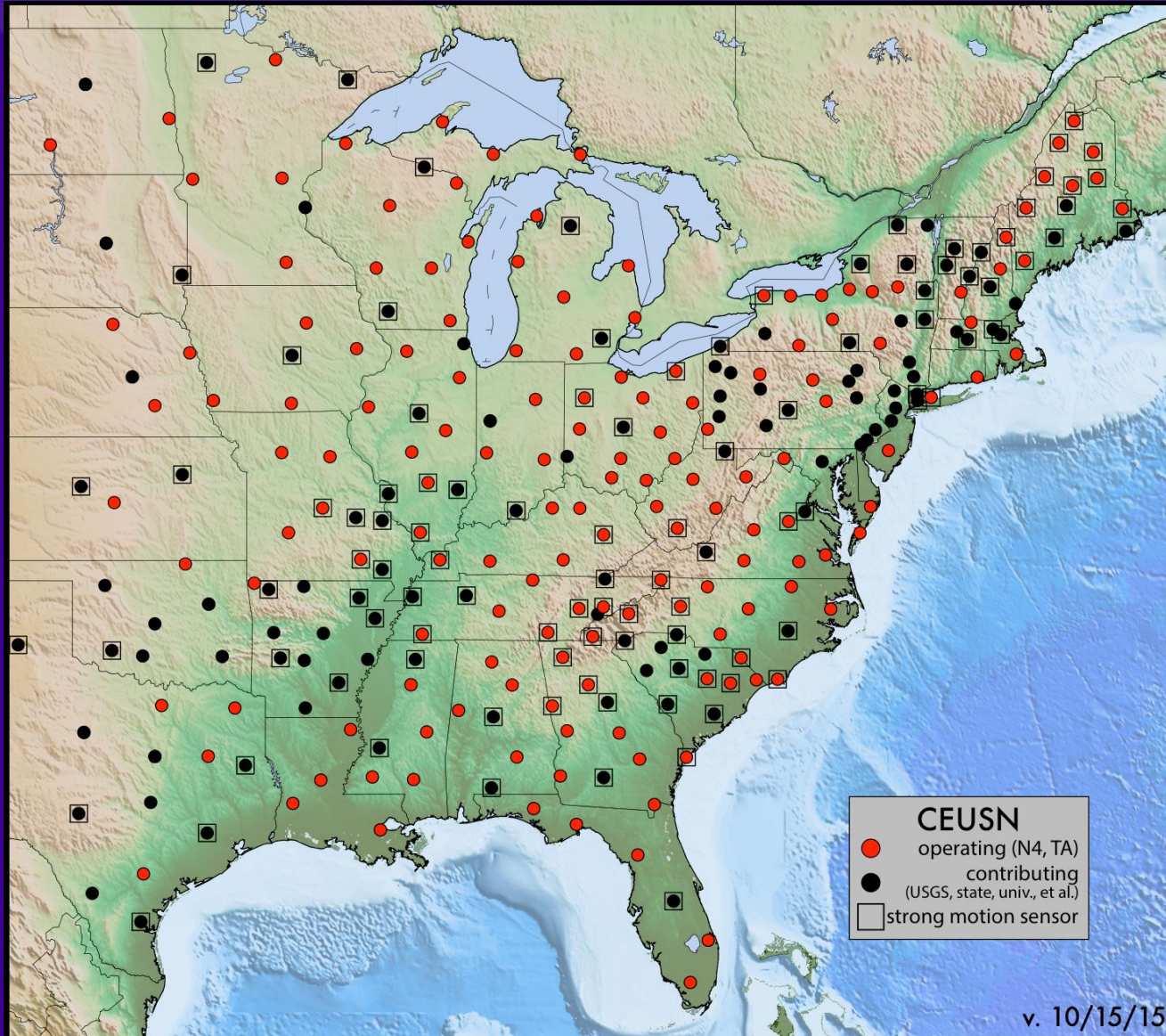
Stations around Prague, OK



Modified from *Sun and Hartzell* [2014]



Central and Eastern US Seismic Network

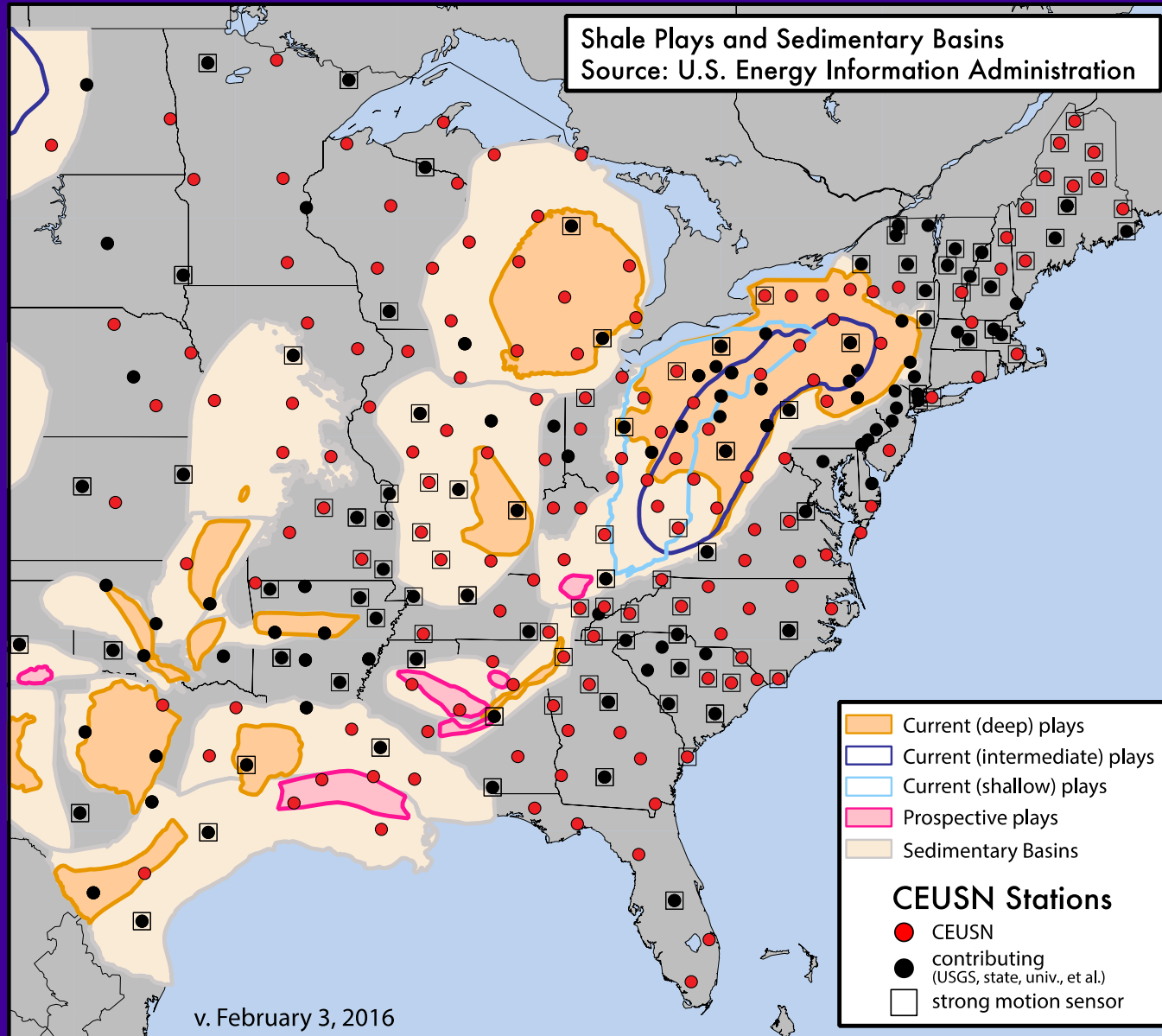


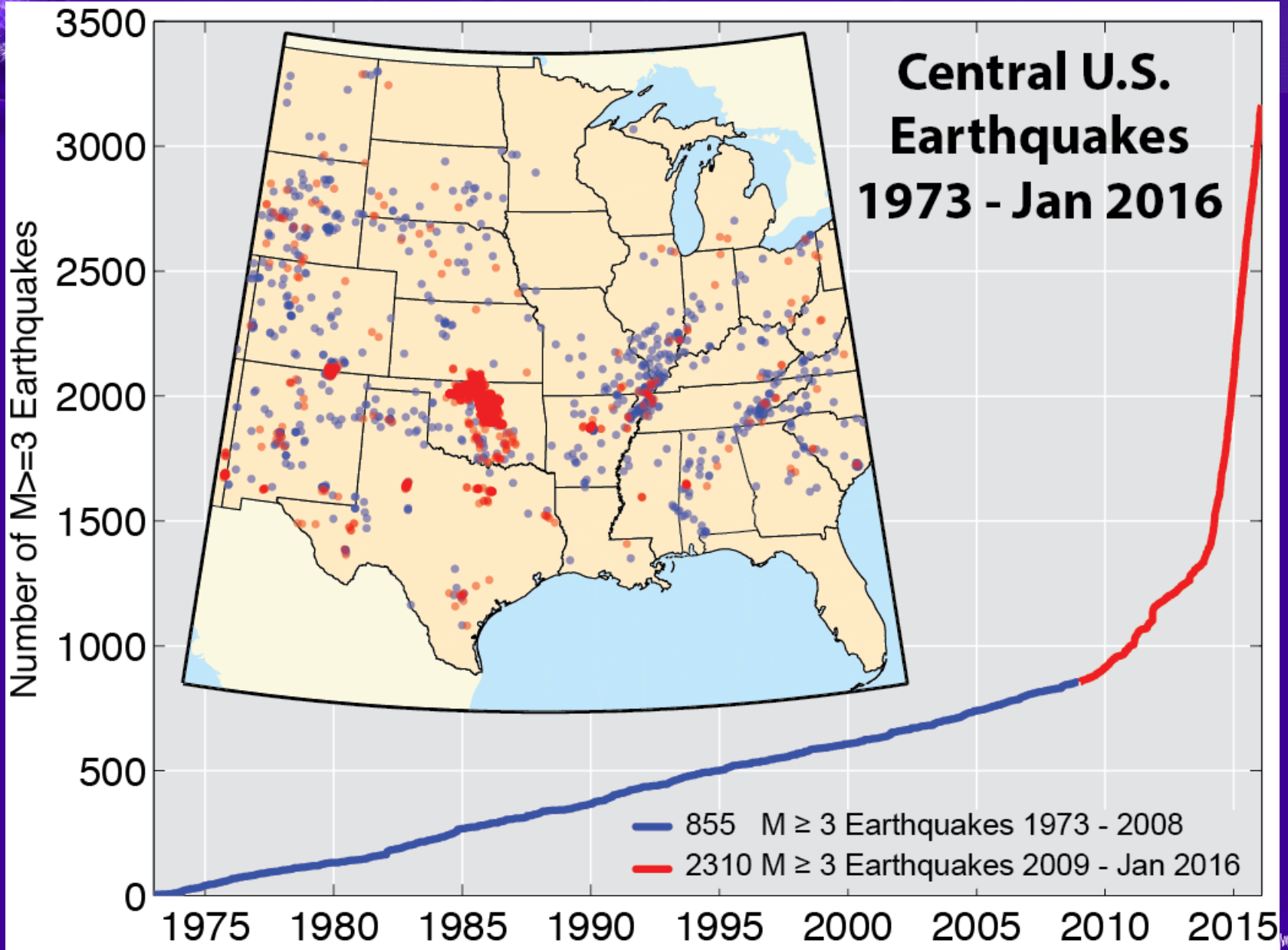
www.usarray.org/ceusn





CEUSN: A Broader Capability





Modified from Rubinstein and Babaie Mahani, 2015 - J. Rubinstein (USGS)



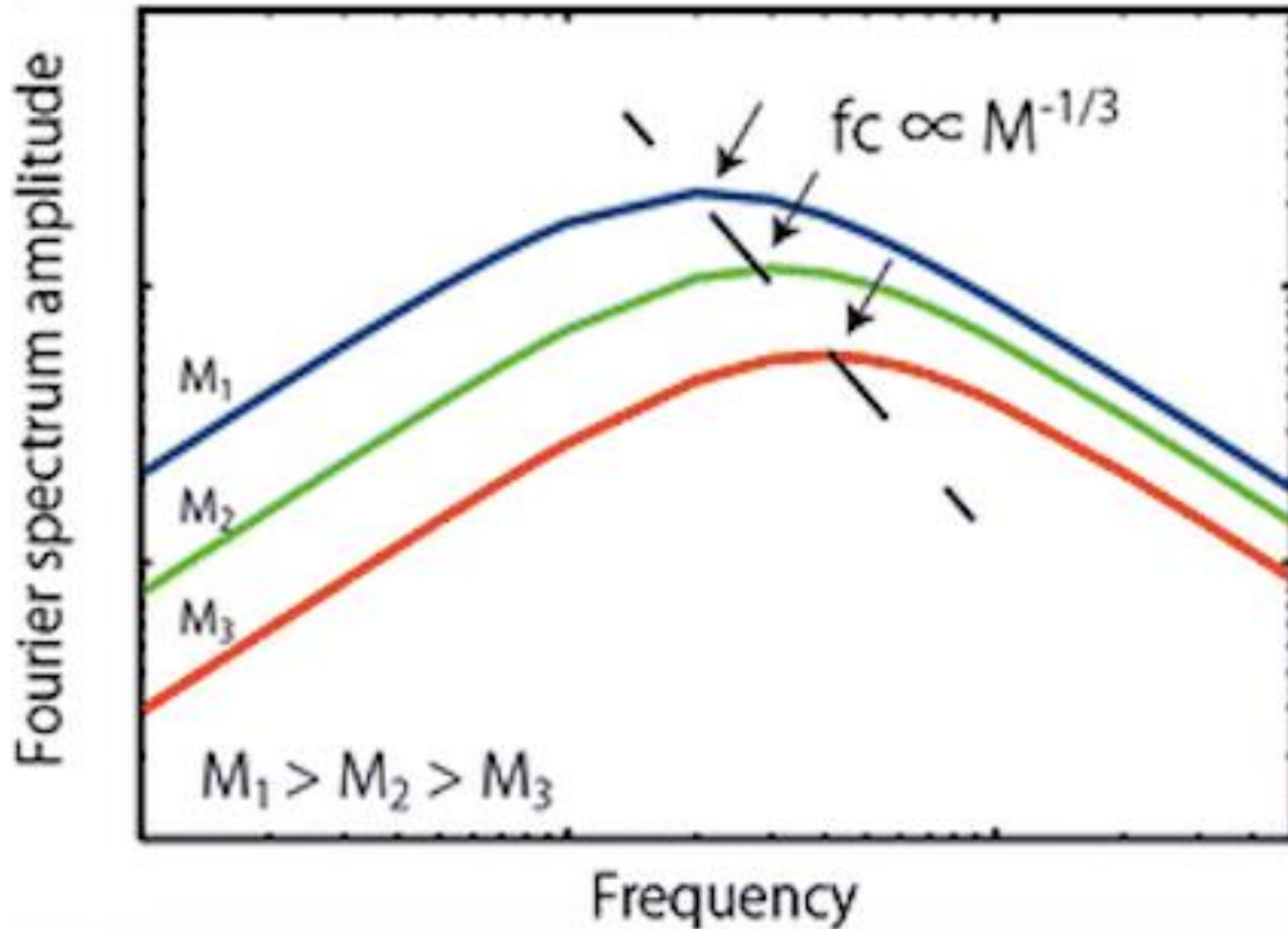


Criteria for induced seismicity

1. Deviation from background seismicity ✓
2. Spatial correlation of seismicity with injection wells ✓
3. Seismicity within the depth intervals of fluid injection ✓

Modified from Davis and Frohlich [1993]

Source Characteristics the Key?



Yabe et al. [2014]



Thanks!!


IRIS